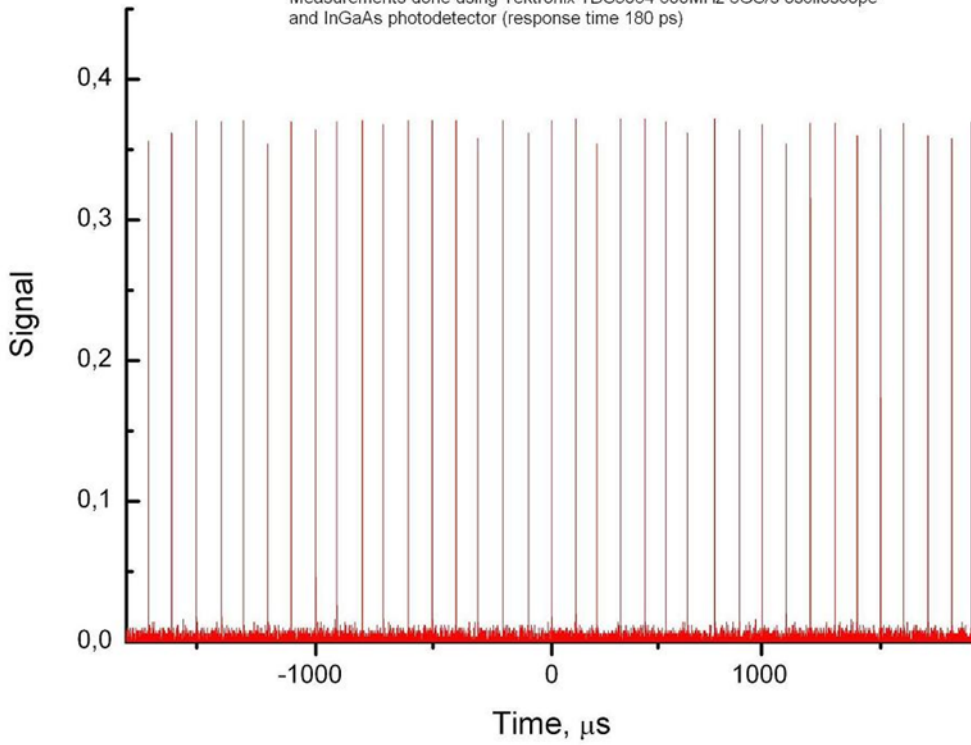


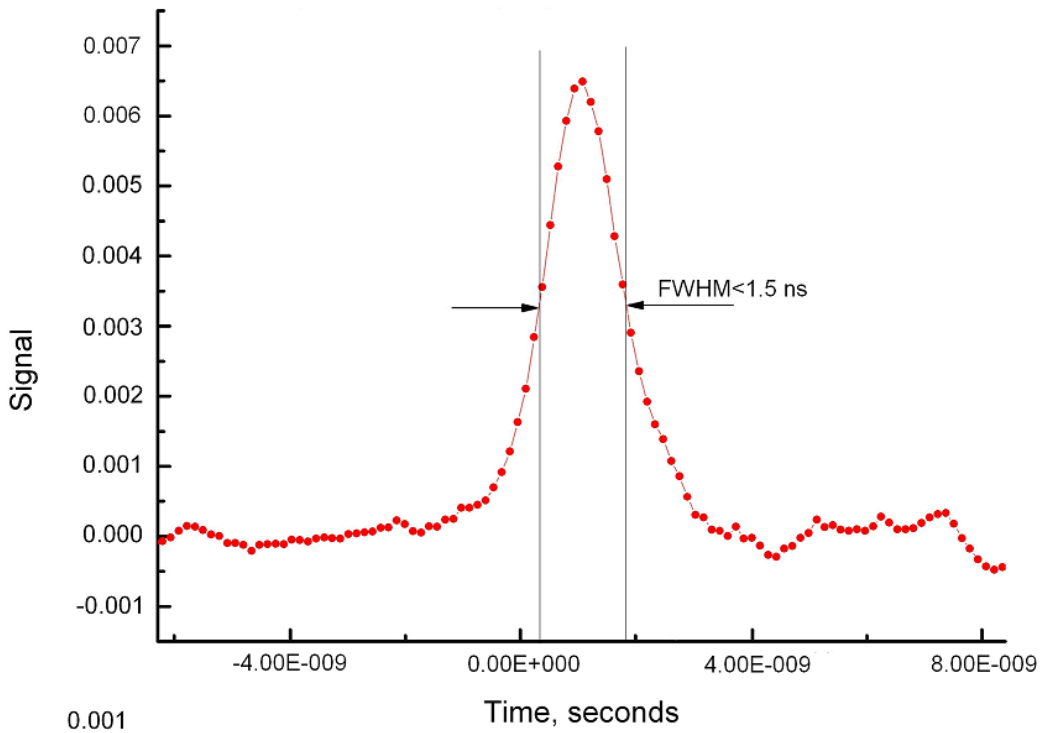
Pulse train of AltLas-C 10 kHz model micro laser

Measurements done using Tektronix TDS3064 600MHz 5GS/s oscilloscope and InGaAs photodetector (response time 180 ps)



AltLAS-C micro laser pulse FWHM

Measurements done using Tektronix TDS3064 600MHz 5GS/s oscilloscope and InGaAs photodetector (response time 180 ps)



Copyright

No information contained in this document may be reproduced in any form, in full or in part, without prior written permission from Altechna Co. Ltd. All information provided is **CONFIDENTIAL**.